

Yesha

C A B L E T I E S

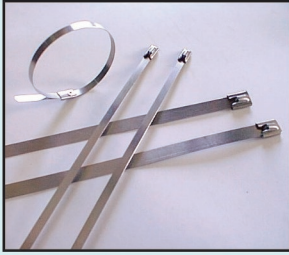


Quality

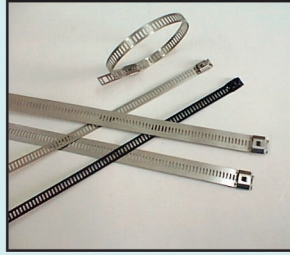
Reliability

Economy

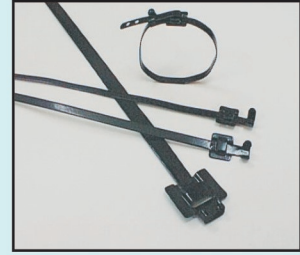
PRODUCT RANGE



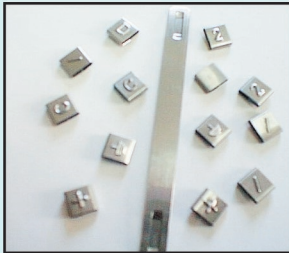
Roller Ball type metal tie



Ladder type metal tie



Releasable type metal tie



Steel marking system



Steel Banding system with buckles



Metal tie installation tool

MATERIAL

Yesha metal ties are available in Stainless Steel Grade 316/304/201.

Stainless Steel is ideally suited for hazardous environment such as extreme temperatures, corrosive atmosphere, intense vibrations and nuclear applications.

For applications that demand high corrosion resistance, use Stainless Steel Grade 316. Stainless Steel 201 is typically suited for signage banding application.

COATED TIES

All metals ties are available with non-toxic halogen free polyester coating.

Coating provides handling comfort at extreme low temperatures. Coating also improves corrosion resistance, impedes weathering effect and protects the bundle.

Fully Coated Roller Ball Type (Patented) is recommended for extreme cold temperatures and offshore applications. It can be effortlessly installed by hand or tool.

Coating is available in a wide choice of colours.

QUALITY

Yesha metal ties have smooth edges. They will not damage wires. They may be safely and reliably installed even by hand.

Yesha metal ties are tested in split mandrel arrangement to specified tensile rating.



APPLICATIONS

General Industry, Utility Industry, Construction, Automobile, Ship Building, Off-Shore, Petroleum and Chemical Industry, Fire Protection, Communication, Aerospace and Nuclear.

Yesha
C A B L E T I E S



ROLLER BALL METAL TIES

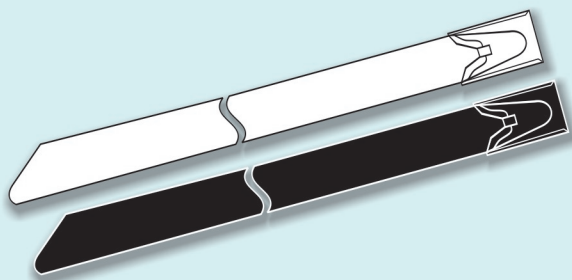
Available in grades 316 & 304, coated or un-coated, in 4.6 mm, 7.9 mm, 12 mm and 16 mm widths and various lengths.

This tie is of a roller-ball design. It is self locking, fast and easy to install. It can be tightened by hand or with a special tool.

Yesha has developed a fully coated roller ball tie (Patented) recommended for extreme cold conditions and offshore applications. This can be installed by hand or tool.

The normal operating range for the roller ball uncoated type is -40° C to +300° C approximately. For the coated type normal operating range is -60° C to +165°C.

Coating is non toxic halogen free Polyester. It is available in a wide choice of colours.



STAINLESS STEEL CABLE TIES TYPE : ROLLER BALL- COATED & UNCOATED TIES

Grade : 316 or 304

Part No.	Length mm	Width mm	Max. Bundle Dia mm
SS100	100	4.6	25
SS125	125	4.6	25
SS150	150	4.6	35
SS200	200	4.6	50
SS300	300	4.6	83
SS360	360	4.6	100
SS400	400	4.6	110
SS520	520	4.6	150
SS680	680	4.6	200
SS840	840	4.6	250
SS1000	1000	4.6	300
SS1200	1200	4.6	365
SS1300	1300	4.6	395
SS1400	1400	4.6	425
SS1600	1600	4.6	490
SS100H	100	7.9	20
SS125H	125	7.9	22
SS150H	150	7.9	35
SS200H	200	7.9	50
SS250H	250	7.9	67
SS300H	300	7.9	83
SS360H	360	7.9	100
SS400H	400	7.9	110
SS450H	450	7.9	130
SS520H	520	7.9	150
SS680H	680	7.9	200
SS840H	840	7.9	250
SS1000H	1000	7.9	300
SS1200H	1200	7.9	365
SS1300H	1300	7.9	395
SS1400H	1400	7.9	425
SS1600H	1600	7.9	490

• Intermediate Lengths available on demand.

• Add Suffix A for 304 Grade : Suffix C for Coated version to Part Nos.

Part No.	Coated	Uncoated
Minimum Loop Tensile Strength : 4.6 mm width	79.0 Kgs. (778N)	79.0 Kgs. (778N)
Minimum Loop Tensile Strength : 7.9 mm width	114.0 Kgs (1112N)	114.0 Kgs (1112N)

Yesha

CABLE TIES



ROLLER BALL METAL TIES

STAINLESS STEEL CABLE TIES TYPE : ROLLER BALL- COATED & UNCOATED TIES Grade : 316 or 304

Part No.	Length mm	Width mm	Max. Bundle Dia mm
SS200XHD	200	12	50
SS300XHD	300	12	83
SS360XHD	360	12	100
SS450XHD	450	12	130
SS520XHD	520	12	150
SS680XHD	680	12	200
SS840XHD	840	12	250
SS1000XHD	1000	12	300
SS1200XHD	1200	12	365
SS1400XHD	1400	12	425
SS200XXHD	200	16	50
SS300XXHD	300	16	80
SS360XXHD	360	16	100
SS450XXHD	450	16	130
SS520XXHD	520	16	150
SS680XXHD	680	16	200
SS840XXHD	840	16	250
SS1000XXHD	1000	16	300
SS1200XXHD	1200	16	365
SS1400XXHD	1400	16	425

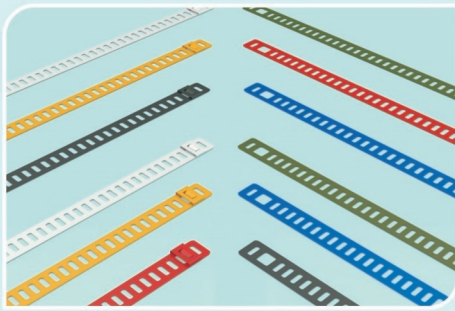
- Roller ball self-locking system (SS316 ball), with low insertion force.
- Quick, easy and reliable installation.
- Few widths (4.6 mm, 7.9 mm, 12 mm & 16 mm), suitable for most applications, indoor and outdoor.
- Uncoated version suitable for high temperature environments.
- Available in 304 grade for standard application and 316 grade (marine grade) for extra corrosion resistance.
- Applications: installation of cables and pipes in extreme conditions and hazardous areas, such as: petrochemical and food processing industries, power stations, mining, shipbuilding, offshore and other aggressive environments.

- Intermediate Lengths available on demand.
- Add Suffix A for 304 Grade : Suffix C for Coated version to Part Nos.

Part No.	Coated	Uncoated
Minimum Loop Tensile Strength : 12.0 mm width	136.0 Kgs. (1335N)	136.0 Kgs. (1335N)
Minimum Loop Tensile Strength : 16.0 mm width	204.0 Kgs. (2002N)	204.0 Kgs. (2002N)

Various Tools are available for SS Cable Ties Installation.





LADDER TIES

STAINLESS STEEL CABLE TIES TYPE : LADDER- COATED & UNCOATED Grade : 316 or 304

Part No.	Length mm	Width mm	Max. Bundle Dia mm
ST100/7	100	7	25
ST150/7	150	7	45
ST200/7	200	7	60
ST225/7	225	7	70
ST250/7	250	7	80
ST300/7	300	7	95
ST360/7	360	7	105
ST450/7	450	7	140
ST520/7	520	7	160
ST610/7	610	7	190
ST650/7	650	7	200
ST750/7	750	7	235
ST915/7	915	7	280
ST1000/7	1000	7	315
ST1200/7	1200	7	375
ST1400/7	1400	7	440
ST1600/7	1600	7	500
ST100/12	100	12	25
ST150/12	150	12	43
ST200/12	200	12	50
ST225/12	225	12	60
ST250/12	250	12	70
ST300/12	300	12	80
ST360/12	360	12	100
ST450/12	450	12	135
ST610/12	610	12	185
ST750/12	750	12	230
ST915/12	915	12	295
ST1000/12	1000	12	310
ST1200/12	1200	12	370
ST1400/12	1400	12	425
ST1600/12	1600	12	495

• Intermediate Lengths available on demand.

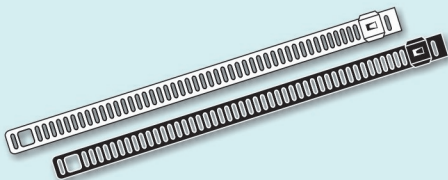
• Add Suffix C for Coated version and Suffix A for 304 Grade to Part Nos.

Available in grades 316 & 304 coated or un-coated, in 7 mm or 12 mm widths.

This Ladder tie is self-locking for easy application, even by hand. The locking system gives a strong hold. Tool available for increasing locking tension. Coated ties are recommended for added resistance to corrosion, chemical and weathering effects.

Normal operating range for un-coated type is -40° C to +300° C. For coated version normal operating range is -60° C to 165° C.

- Strong self-locking ratchet mechanism, requires no time consuming crimping or folding operations.
- Flat and low profile head (no sharp edge), for easy installation.
- Corrosion resistant 316 grade stainless steel (marine grade) for high mechanical and chemical durability.
- Uncoated version for high temperature applications.
- Increased usable length (slots up to the end of the tail), allows larger bundle diameters with the same tie length.
- Larger slot at the end, allows, the use of a hook-type tool.
- Coated applications installation of cables and pipes in extreme conditions and hazardous areas, indoor and outdoor, such as petrochemical and food processing industries, powerstation, mining, shipbuilding, offshore and other aggressive environments



Part No.	Coated	Uncoated
Minimum Loop Tensile Strength : 7 mm width	54.0 Kgs. (529N)	54.0 Kgs. (529N)
Minimum Loop Tensile Strength : 12.0 mm width	79.0 Kgs (778N)	79.0 Kgs (778N)

Yesha

CABLE TIES



RELEASABLE METAL TIES

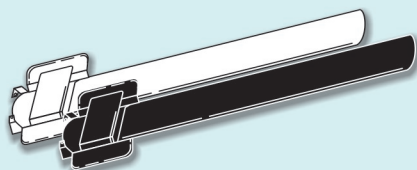
This type of stainless steel tie, available in grade 316 & 304 is releasable and reusable.

These ties can be supplied with or without coating in a wide combination of lengths and widths, as well as colours for the coated type.

Fasten-unfasten-refasten means greater flexibility with the releasable tie.

Normal operating range for the coated version is -60°C to +165°C. Coated ties have better weathering properties with excellent resistance to corrosion, radiation and abrasion.

- Releasable and re-usable.
- Corrosion resistant 316 grade stainless steel for high mechanical and chemical durability.
- Fully coated version with non-toxic, Halogen free Polyester coating for a superior protection and cables and installer's hands and for an improved insulation between dissimilar materials.
- Fast, easy and reliable installation - can be installed by hand and if necessary, the slots at the end of the tie allow the use of a hook type tool.
- The additional ears can be bent back over the fastened tie to increase the tensile strength.
- Applications: installation of cables and pipes in extreme conditions and hazardous areas, indoor and outdoor, such as: petrochemical and food processing industries, power, shipbuilding, offshore and other aggressive environments.

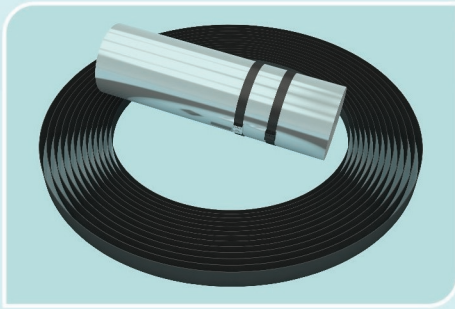


STAINLESS STEEL CABLE TIES TYPE : RELEASABLE COATED & UNCOATED GRADE : SS316 OR 304

Part No.	Length mm	Width mm	Max. Bundle Dia mm
RCT150/5	150	5	36
RCT230/5	230	5	60
RCT300/5	300	5	85
RCT330/5	330	5	95
RCT450/5	450	5	130
RCT610/5	610	5	180
RCT650/5	650	5	190
RCT762/5	762	5	230
RCT840/5	840	5	250
RCT914/5	914	5	275
RCT1000/5	1000	5	300
RCT1400/5	1400	5	430
RCT1600/5	1600	5	500
RCT150/10	150	10	40
RCT230/10	230	10	60
RCT300/10	300	10	85
RCT330/10	330	10	95
RCT450/10	450	10	130
RCT610/10	610	10	180
RCT650/10	650	10	190
RCT762/10	762	10	230
RCT840/10	840	10	250
RCT914/10	914	10	275
RCT1000/10	1000	10	300
RCT1400/10	1400	10	425
RCT1600/10	1600	10	500

- Intermediate Lengths available on demand.
- Add Suffix C for Coated version to Part Nos.

Part No.	Coated	Uncoated
Minimum Loop Tensile Strength : 5 mm width	136 Kgs. (1335N)	181 Kgs. (1779N)
Minimum Loop Tensile Strength : 10 mm width	224 Kgs (2200N)	224 Kgs (2200N)



STEEL BANDING SYSTEM

Stainless Steel 316, 304 & 201 is typically used for this application. Combination of lengths (30.5 meters or 61 meters), widths (9.53 mm or 12.7 mm) and thickness' (0.38 mm, 0.5 mm, 0.64 mm or 0.76 mm) allow greater flexibility of usage for securing large bundles.

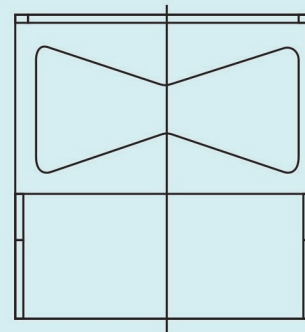
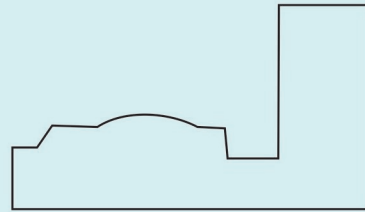
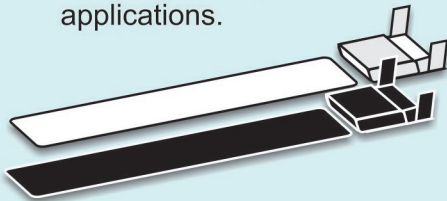
Steel Banding System is ideally suited for fixing sings, air-conditioning systems, large duct and pipes. Coated banding is available for application in harsh environments.

Pre-assembled banding system is also available.

Easy handling tool is available for installing Steel Banding System.

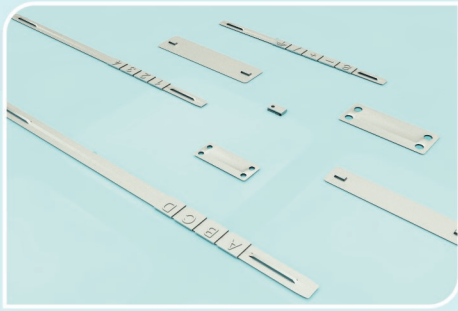
Other sizes and material are also available upon request.

- A new range of stainless steel band on reel with separate heads, for a cost saving installation without waste.
- Bands and heads are made of corrosion resistant 316 grade stainless steel, for high mechanical and chemical durability.
- Bands are fully covered with a non-toxic, halogen free black Polypropylene sheath, for a superior protection of cables and installer's hands, and for an improved insulation between dissimilar materials.
- Cost saving and flexible: the 25-metre reels allow a customised installation (no waste) around all sized and shapes of objects.
- Dedicated separate heads are easy to install.
- Available in 5 widths up to 6.35 mm, 9.53 mm, 12.70 mm, 15.88 mm, 19.01 mm, to suit a wide range of applications.



Yesha

CABLE TIES



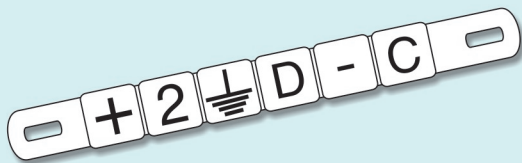
STEEL MARKING SYSTEM

A comprehensive range of Stainless Steel Marking System is available for effortless and permanent identification of cable assemblies or ducting systems, even in harsh environments.

This system can be applied with Roller Ball or Ladder Type Steel Ties.

Upon request, we can also supply Roller Ball Type Steel Ties with customized marking.

- Sleeves with pre-embossed characters (letters, digits and symbols)
- Pre-embossed characters are raised above the surface of the sleeve, which makes them easy to read even when covered with dust, paint or dirt.
- Dedicated strips can carry 6, 10 or 16 sleeves
- Sleeves and strips are made of corrosion resistant 316 grade stainless steel (marine grade), for high mechanical and chemical durability.
- The sleeves can be mounted onto the carrier strips (which will be secured by Yesha stainless steel ties) or directly onto Yesha stainless steel ties having a width upto 7.9 mm



STEEL MARKING SYSTEM

Description	Yesha Part No.	Dimensions (L x W) mm
Embossable Tag	T - 6334	63 x 34
Embossable Tag	T - 5119	51 x 19
Embossable Tag	T - 8919	89 x 19
Carrier 6	ID - 6	92.5 x 8
Carrier 10	ID - 10	130.6 x 8
Carrier 16	ID - 16	187.7 x 8
Alphabets	A...Z	9 x 2.5
Numbers	0...9	9 x 2.5
Symbols	-, +, /, Blank, Earth	9 x 2.5



Yesha

CABLE TIES

YESHA ELECTRICALS PRIVATE LTD.

C-2/18, INDUSTRIAL ESTATE, GORWA ROAD,
VADODARA-390 016 (INDIA)

PH. : +91-265-2282271 / 2282400 • FAX : +91-265-2281500

Email : yesha@usa.net

Website : <http://www.yeshaelectricals.com>